

Higher Confidence in Your Data

Leveraging *CygNet's* comprehensive suite of intelligent EFM protocols we can effectively retrieve measurement data from many third party devices, over different telecom infrastructures, and varying operational conditions to ensure timely and complete data set are available in the system. The measurement data is normalized from the various native field formats, to a user selectable set of units and conditions. Data is verified with our extensible validation and estimation package which includes a full set of certified gas calculations.

The measurement data is qualified as changes occur so that the highest available data quality is automatically prioritized to be the active set of best system data (BSD), without the need for user interaction. The system further uses the BSD and data quality on all roll-ups and balances, and across any time period to provide the business with a complete set of best available data and related overall quality to make very timely and informed decisions.

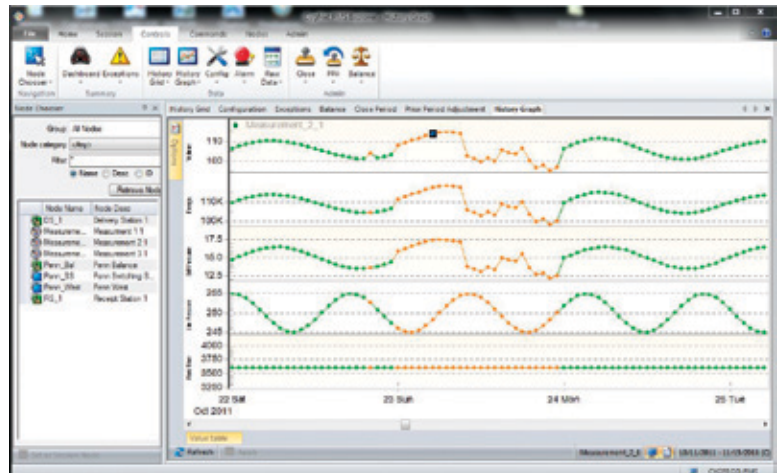
Spend Less Time and Risk on Integration

CygNet Measurement is the first measurement system to be seamlessly integrated with a full featured SCADA solution which eliminates complex and risky system upgrades. The system's tight integration with *CygNet* Hosts lowers the total cost of ownership by providing fewer points of configuration and maintenance for your operation's platform and IT infrastructure.

The system can be easily configured to transfer data to/from third party systems such as production accounting systems, which reduces the number of interfaces and instances of data redundancy. To further simplify integration, *CygNet* Measurement can be combined with the *CygNet* Gas Applications Suite delivering a complete product solution for today's gas operations.

Key Features of *CygNet* Measurement

- Truly distributed architecture for high performance and scalability to support large data sets and numerous concurrent system users and data changes.
- Configurable native protocol drivers which support many third-party field devices/handheld protocols. Optimized for efficient data retrieval over various infrastructures and to reduce missing data.
- Complete set of gas calculations certified by a third party and compliant with the latest draft API 21.1 standard.
- Extensive and flexible validation and estimation rules can be applied to one or more stations and with full date/time effectiveness.
- BSD publishes data that is fully normalized to a given set of conditions and formats, which has been qualified as highest available data quality.
- Advanced user interface presents a highly informative and prioritized view of the current major issues and their root causes. The context sensitive multi-monitor environment makes it easy to navigate through multiple locations and issues, and present all the related information cohesively.



CygNet Measurement history-graph.